

Module -2

Distribution Models

The primary driver of interest in NoSQL has been its ability to run databases on a large cluster. As data volumes increase, it becomes more difficult and expensive to scale up buy a bigger server to run the database on. A more appealing option is to scale out run the database on a cluster of servers. Aggregate orientation fits well with scaling out because the aggregate is a natural unit to use for distribution.

Depending on your distribution model, you can get a data store that will give you the ability to handle larger quantities of data, the ability to process a greater read or write traffic, or more availability in the face of network slowdowns or breakages.

Broadly, there are two paths to data distribution: replication and sharding. Replication takes the same data and copies it over multiple nodes. Sharding puts different data on different nodes. Replication and sharding are orthogonal techniques: You can use either or both of them. Replication comes into two forms: master-slave and peer-to-peer. We will now discuss these techniques starting at the simplest and working up to the more complex: first single-server, then master-slave replication, then sharding, and finally peer-to-peer replication.

1.1 Single Server

The first and the simplest distribution option is the one we would most often recommend no distribution at all. Run the database on a single machine that handles all the reads and writes to the data store. We prefer this option because it eliminates all the complexities that the other options introduce; it's easy for operations people to manage and easy for application developers to reason about.

Although a lot of NoSQL databases are designed around the idea of running on a cluster, it can make sense to use NoSQL with a single-server distribution model if the data model of the NoSQL store is more suited to the application. Graph databases are the obvious category here these work best in a single-server configuration. If your data usage is mostly about processing aggregates, then a single-server document or key-value store may well be worthwhile because it's easier on application developers.

For the rest of this chapter we'll be wading through the advantages and complications of more sophisticated distribution schemes. Don't let the volume of words fool you into thinking that we would prefer these options. If we can get away without distributing our data, we will always choose a single-server approach.

1.2 Sharding

Often, a busy data store is busy because different people are accessing different parts of the dataset. In these circumstances we can support horizontal scalability by putting different parts of the data on different servers a technique that's called **sharding** ([Figure 1.1](#)).

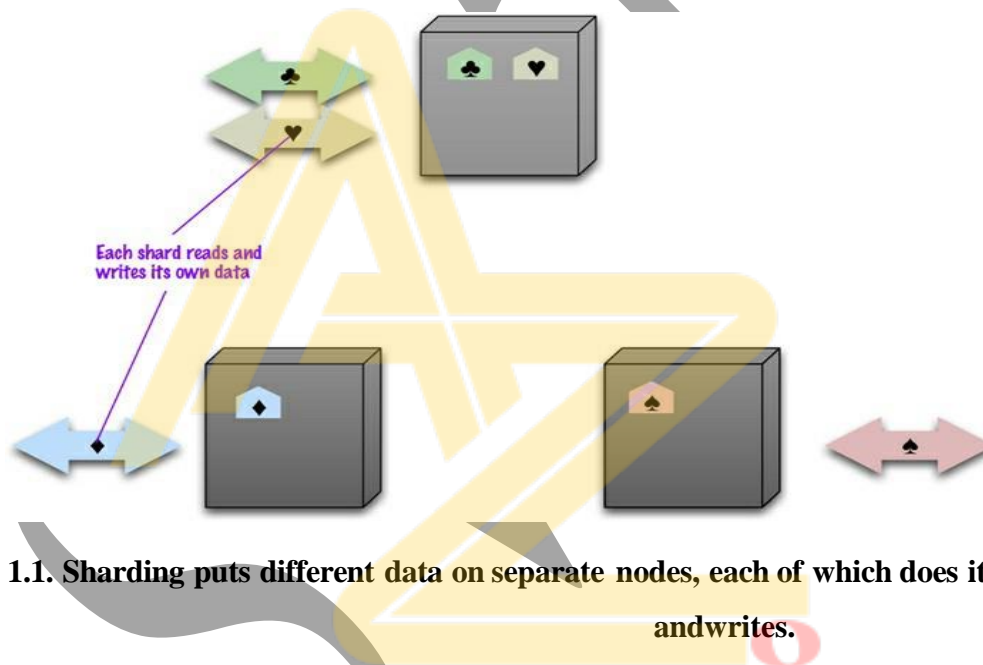


Figure 1.1. Sharding puts different data on separate nodes, each of which does its own reads and writes.

In the ideal case, we have different users all talking to different server nodes. Each user only has to talk to one server, so gets rapid responses from that server. The load is balanced out nicely between servers—for example, if we have ten servers, each one only has to handle 10% of the load.

Of course the ideal case is a pretty rare beast. In order to get close to it we have to ensure that data that's accessed together is clumped together on the same node and that these clumps are arranged on the nodes to provide the best data access.

The first part of this question is how to clump the data up so that one user mostly gets her data from a single server. This is where aggregate orientation comes in really handy. The whole point of aggregates is that we design them to combine data that's commonly accessed together—so

aggregates leap out as an obvious unit of distribution.

When it comes to arranging the data on the nodes, there are several factors that can help improve performance. If you know that most accesses of certain aggregates are based on a physical location, you can place the data close to where it's being accessed. If you have orders for someone who lives in Boston, you can place that data in your eastern US data center.

Another factor is trying to keep the load even. This means that you should try to arrange aggregates so they are evenly distributed across the nodes which all get equal amounts of the load. This may vary over time, for example if some data tends to be accessed on certain days of the week—so there may be domain-specific rules you'd like to use.

In some cases, it's useful to put aggregates together if you think they may be read in sequence. The Bigtable paper described keeping its rows in lexicographic order and sorting web addresses based on reversed domain names (e.g., com.martinfowler). This way data for multiple pages could be accessed together to improve processing efficiency.

Historically most people have done sharding as part of application logic. You might put all customers with surnames starting from A to D on one shard and E to G on another. This complicates the programming model, as application code needs to ensure that queries are distributed across the various shards. Furthermore, rebalancing the sharding means changing the application code and migrating the data. Many NoSQL databases offer **auto-sharding**, where the database takes on the responsibility of allocating data to shards and ensuring that data access goes to the right shard. This can make it much easier to use sharding in an application.

Sharding is particularly valuable for performance because it can improve both read and write performance. Using replication, particularly with caching, can greatly improve read performance but does little for applications that have a lot of writes. Sharding provides a way to horizontally scale writes.

Sharding does little to improve resilience when used alone. Although the data is on different nodes, a node failure makes that shard's data unavailable just as surely as it does for a single-server solution. The resilience benefit it does provide is that only the users of the data on that shard will suffer; however, it's not good to have a database with part of its data missing. With a single server it's easier to pay the effort and cost to keep that server up and running; clusters usually try to use less reliable machines, and you're more likely to get a node failure. So in

practice, sharding alone is likely to decrease resilience.

Despite the fact that sharding is made much easier with aggregates, it's still not a step to be taken lightly. Some databases are intended from the beginning to use sharding, in which case it's wise to run them on a cluster from the very beginning of development, and certainly in production. Other databases use sharding as a deliberate step up from a single-server configuration, in which case it's best to start single-server and only use sharding once your load projections clearly indicate that you are running out of headroom.

In any case the step from a single node to sharding is going to be tricky. We have heard tales of teams getting into trouble because they left sharding to very late, so when they turned it on in production their database became essentially unavailable because the sharding support consumed all the database resources for moving the data onto new shards. The lesson here is to use sharding well before you need to when you have enough headroom to carry out the sharding.

1.3 Master-Slave Replication

With master-slave distribution, you replicate data across multiple nodes. One node is designated as the master, or primary. This master is the authoritative source for the data and is usually responsible for processing any updates to that data. The other nodes are slaves, or secondaries. A replication process synchronizes the slaves with the master ([Figure 1.2](#)).

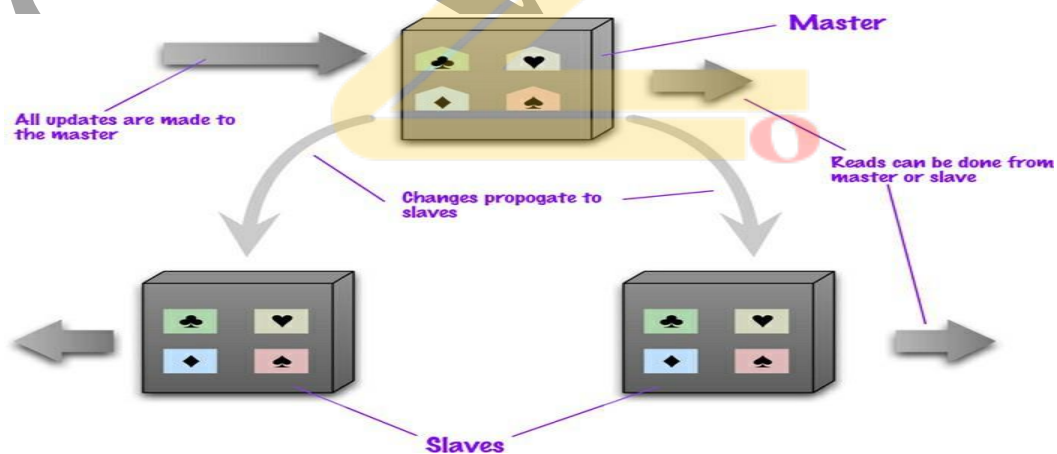


Figure 1.2. Data is replicated from master to slaves. The master services all writes; reads may come from either master or slaves.

Master-slave replication is most helpful for scaling when you have a read-intensive dataset. You can scale horizontally to handle more read requests by adding more slave nodes and ensuring

that all read requests are routed to the slaves. You are still, however, limited by the ability of the master to process updates and its ability to pass those updates on. Consequently it isn't such a good scheme for datasets with heavy write traffic, although offloading the read traffic will help a bit with handling the write load.

A second advantage of master-slave replication is **read resilience**: Should the master fail, the slaves can still handle read requests. Again, this is useful if most of your data access is reads. The failure of the master does eliminate the ability to handle writes until either the master is restored or a new master is appointed. However, having slaves as replicates of the master does speed up recovery after a failure of the master since a slave can be appointed a new master very quickly.

The ability to appoint a slave to replace a failed master means that master-slave replication is useful even if you don't need to scale out. All read and write traffic can go to the master while the slave acts as a hot backup. In this case it's easiest to think of the system as a single-server store with a hot backup. You get the convenience of the single-server configuration but with greater resilience which is particularly handy if you want to be able to handle server failures gracefully.

Masters can be appointed manually or automatically. Manual appointing typically means that when you configure your cluster, you configure one node as the master. With automatic appointment, you create a cluster of nodes and they elect one of themselves to be the master. Apart from simpler configuration, automatic appointment means that the cluster can automatically appoint a new master when a master fails, reducing downtime.

In order to get read resilience, you need to ensure that the read and write paths into your application are different, so that you can handle a failure in the write path and still read. This includes such things as putting the reads and writes through separate database connections—a facility that is not often supported by database interaction libraries. As with any feature, you cannot be sure you have read resilience without good tests that disable the writes and check that reads still occur.

Replication comes with some alluring benefits, but it also comes with an inevitable dark side inconsistency. You have the danger that different clients, reading different slaves, will see different values because the changes haven't all propagated to the slaves. In the worst case, that can mean that a client cannot read a write it just made. Even if you use master-slave replication just for hot backup this can be a concern, because if the master fails, any updates not passed on to the backup are lost.

1.4 Peer-to-Peer Replication

Master-slave replication helps with read scalability but doesn't help with scalability of writes. It provides resilience against failure of a slave, but not of a master. Essentially, the master is still a bottleneck and a single point of failure. Peer-to-peer replication ([Figure 1.3](#)) attacks these problems by not having a master. All the replicas have equal weight, they can all accept writes, and the loss of any of them doesn't prevent access to the data store.

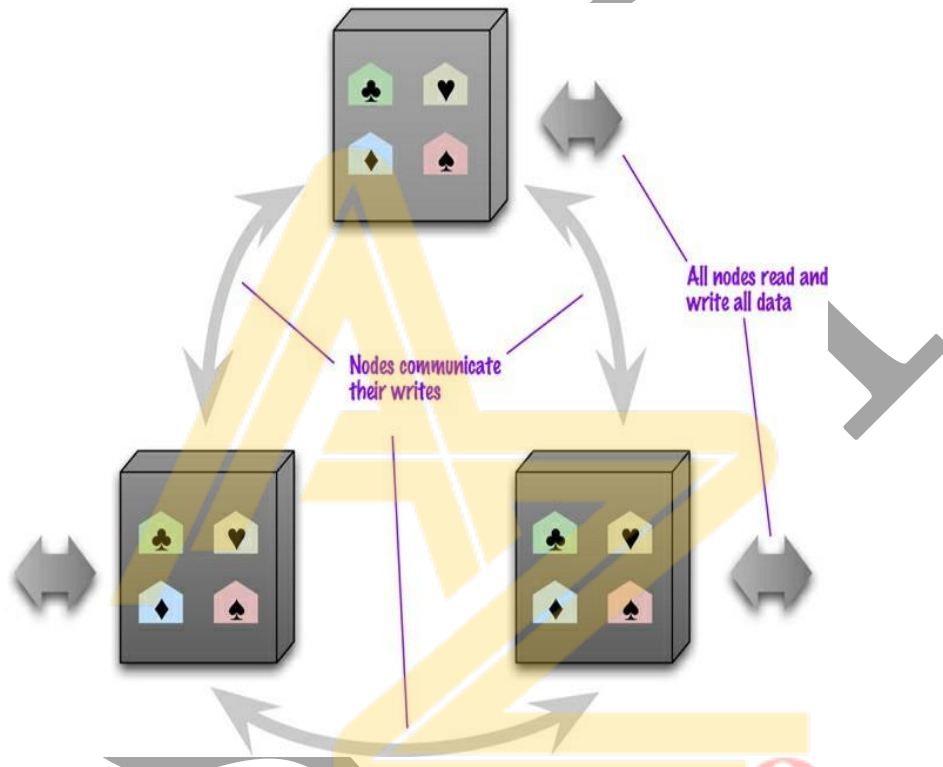


Figure 1.3. Peer-to-peer replication has all nodes applying reads and writes to all the data.

The prospect here looks mighty fine. With a peer-to-peer replication cluster, you can ride over node failures without losing access to data. Furthermore, you can easily add nodes to improve your performance. There's much to like here but there are complications.

The biggest complication is, again, consistency. When you can write to two different places, you run the risk that two people will attempt to update the same record at the same time a write-write conflict. Inconsistencies on read lead to problems but at least they are relatively transient. Inconsistent writes are forever.

We'll talk more about how to deal with write inconsistencies later on, but for the moment we'll

note a couple of broad options. At one end, we can ensure that whenever we write data, the replicas coordinate to ensure we avoid a conflict. This can give us just as strong a guarantee as a master, albeit at the cost of network traffic to coordinate the writes. We don't need all the replicas to agree on the write, just a majority, so we can still survive losing a minority of the replica nodes.

At the other extreme, we can decide to cope with an inconsistent write. There are contexts when we can come up with policy to merge inconsistent writes. In this case we can get the full performance benefit of writing to any replica.

These points are at the ends of a spectrum where we trade off consistency for availability.

1.5 Combining Sharding and Replication

Replication and sharding are strategies that can be combined. If we use both master-slave replication and sharding (see [Figure 1.4](#)), this means that we have multiple masters, but each data item only has a single master. Depending on your configuration, you may choose a node to be a master for some data and slaves for others, or you may dedicate nodes for master or slave duties.

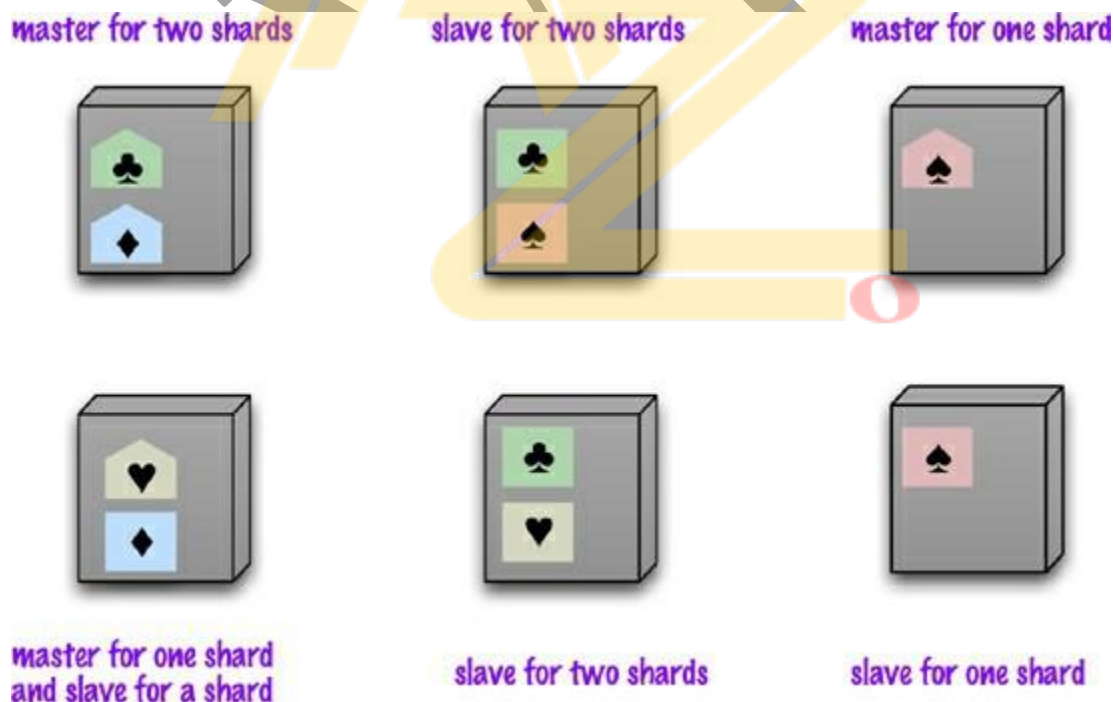


Figure 1.4. Using master-slave replication together with sharding

Using peer-to-peer replication and sharding is a common strategy for column-family databases. In scenario like this you might have tens or hundreds of nodes in a cluster with data sharded over them.

A good starting point for peer-to-peer replication is to have a replication factor of 3, so each shard is present on three nodes. Should a node fail, then the shards on that node will be built on the other nodes (see [Figure 1.5](#)).

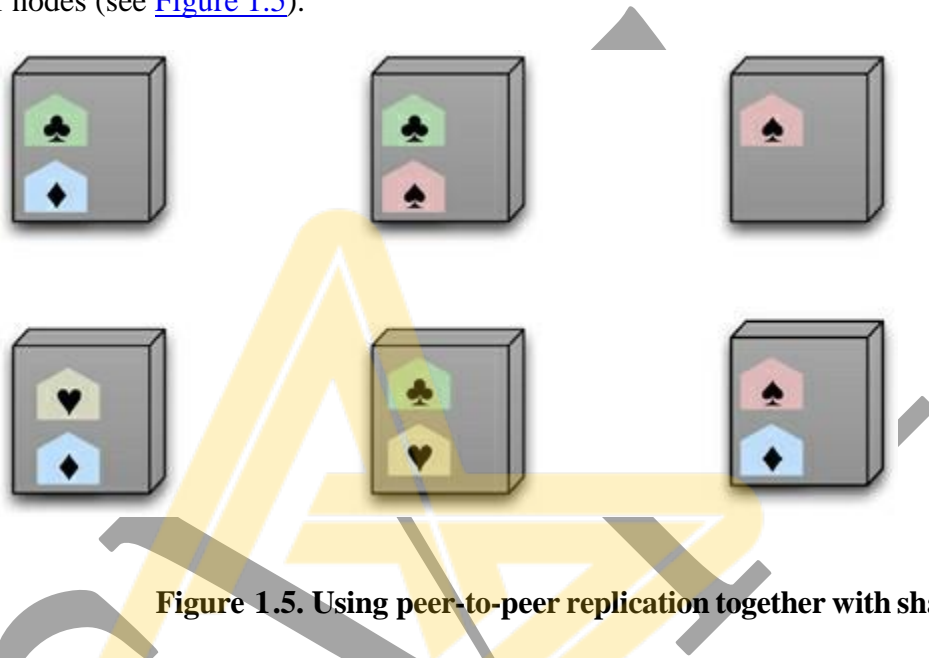


Figure 1.5. Using peer-to-peer replication together with sharding

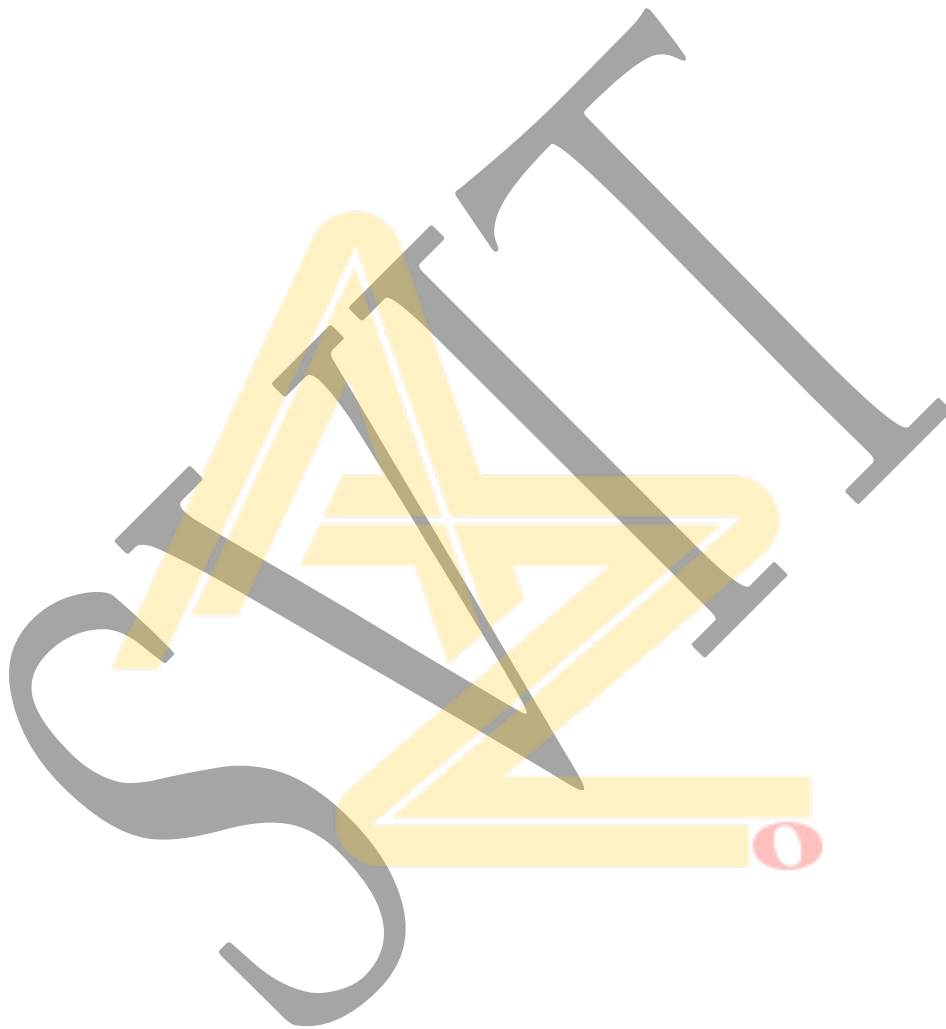
Key Points

- There are two styles of distributing data:
 - Sharding distributes different data across multiple servers, so each server acts as the single source for a subset of data.
 - Replication copies data across multiple servers, so each bit of data can be found in multiple places.

A system may use either or both techniques.

- Replication comes in two forms:
 - Master-slave replication makes one node the authoritative copy that handles writes while slaves synchronize with the master and may handle reads.
 - Peer-to-peer replication allows writes to any node; the nodes coordinate to synchronize their copies of the data.

Master-slave replication reduces the chance of update conflicts but peer-to-peer replication avoids loading all writes onto a single point of failure.



Chapter 2.

Consistency

One of the biggest changes from a centralized relational database to a cluster-oriented NoSQL database is in how you think about consistency. Relational databases try to exhibit **strong consistency** by avoiding all the various inconsistencies that we'll shortly be discussing. Once you start looking at the NoSQL world, phrases such as "CAP theorem" and "eventual consistency" appear, and as soon as you start building something you have to think about what sort of consistency you need for your system.

Consistency comes in various forms, and that one word covers a myriad of ways errors can creep into your life. So we're going to begin by talking about the various shapes consistency can take. After that we'll discuss why you may want to relax consistency (and its big sister, durability).

2.1 Update Consistency

We'll begin by considering updating a telephone number. Coincidentally, Martin and Pramod are looking at the company website and notice that the phone number is out of date. Implausibly, they both have update access, so they both go in at the same time to update the number. To make the example interesting, we'll assume they update it slightly differently, because each uses a slightly different format. This issue is called a **write-write conflict**: two people updating the same data item at the same time.

When the writes reach the server, the server will **serialize** them—decide to apply one, then the other. Let's assume it uses alphabetical order and picks Martin's update first, then Pramod's. Without any concurrency control, Martin's update would be applied and immediately overwritten by Pramod's. In this case Martin's is a **lost update**. Here the lost update is not a big problem, but often it is. We see this as a failure of consistency because Pramod's update was based on the state before Martin's update, yet was applied after it.

Approaches for maintaining consistency in the face of concurrency are often described as pessimistic or optimistic. A **pessimistic** approach works by preventing conflicts from occurring; an **optimistic** approach lets conflicts occur, but detects them and takes action to sort them out. For update conflicts, the most common pessimistic approach is to have write locks, so that in order to

change a value you need to acquire a lock, and the system ensures that only one client can get a lock at a time.

So Martin and Pramod would both attempt to acquire the write lock, but only Martin (the first one) would succeed. Pramod would then see the result of Martin's write before deciding whether to make his own update.

A common optimistic approach is a **conditional update** where any client that does an update tests the value just before updating it to see if it's changed since his last read. In this case, Martin's update would succeed but Pramod's would fail. The error would let Pramod know that he should look at the value again and decide whether to attempt a further update.

Both the pessimistic and optimistic approaches that we've just described rely on a consistent serialization of the updates. With a single server, this is obvious—it has to choose one, then the other. But if there's more than one server, such as with peer-to-peer replication, then two nodes might apply the updates in a different order, resulting in a different value for the telephone number on each peer.

Often, when people talk about concurrency in distributed systems, they talk about sequential consistency—ensuring that all nodes apply operations in the same order.

There is another optimistic way to handle a write-write conflict—save both updates and record that they are in conflict. This approach is familiar to many programmers from version control systems, particularly distributed version control systems that by their nature will often have conflicting commits. The next step again follows from version control: You have to merge the two updates somehow. Maybe you show both values to the user and ask them to sort it out—this is what happens if you update the same contact on your phone and your computer. Alternatively, the computer may be able to perform the merge itself; if it was a phone formatting issue, it may be able to realize that and apply the new number with the standard format. Any automated merge of write-write conflicts is highly domain-specific and needs to be programmed for each particular case.

Often, when people first encounter these issues, their reaction is to prefer pessimistic concurrency because they are determined to avoid conflicts. While in some cases this is the right answer, there is always a tradeoff. Concurrent programming involves a fundamental tradeoff between safety (avoiding errors such as update conflicts) and liveness (responding quickly to clients). Pessimistic approaches often severely degrade the responsiveness of a system to the

SUNIL G L, DEPT. OF CSE, SVIT, BENGALURU

degree that it becomes unfit for its purpose. This problem is made worse by the danger of errors—pessimistic concurrency often leads to deadlocks, which are hard to prevent and debug.

Replication makes it much more likely to run into write-write conflicts. If different nodes have different copies of some data which can be independently updated, then you'll get conflicts unless you take specific measures to avoid them. Using a single node as the target for all writes for some data makes it much easier to maintain update consistency. Of the distribution models we discussed earlier, all but peer-to-peer replication do this.

2.2 Read Consistency

Having a data store that maintains update consistency is one thing, but it doesn't guarantee that readers of that data store will always get consistent responses to their requests. Let's imagine we have an order with line items and a shipping charge. The shipping charge is calculated based on the line items in the order. If we add a line item, we thus also need to recalculate and update the shipping charge. In a relational database, the shipping charge and line items will be in separate tables. The danger of inconsistency is that Martin adds a line item to his order, Pramod then reads the line items and shipping charge, and then Martin updates the shipping charge. This is an **inconsistent read** or **read-write conflict**. In [Figure 2.1](#) Pramod has done a read in the middle of Martin's write.

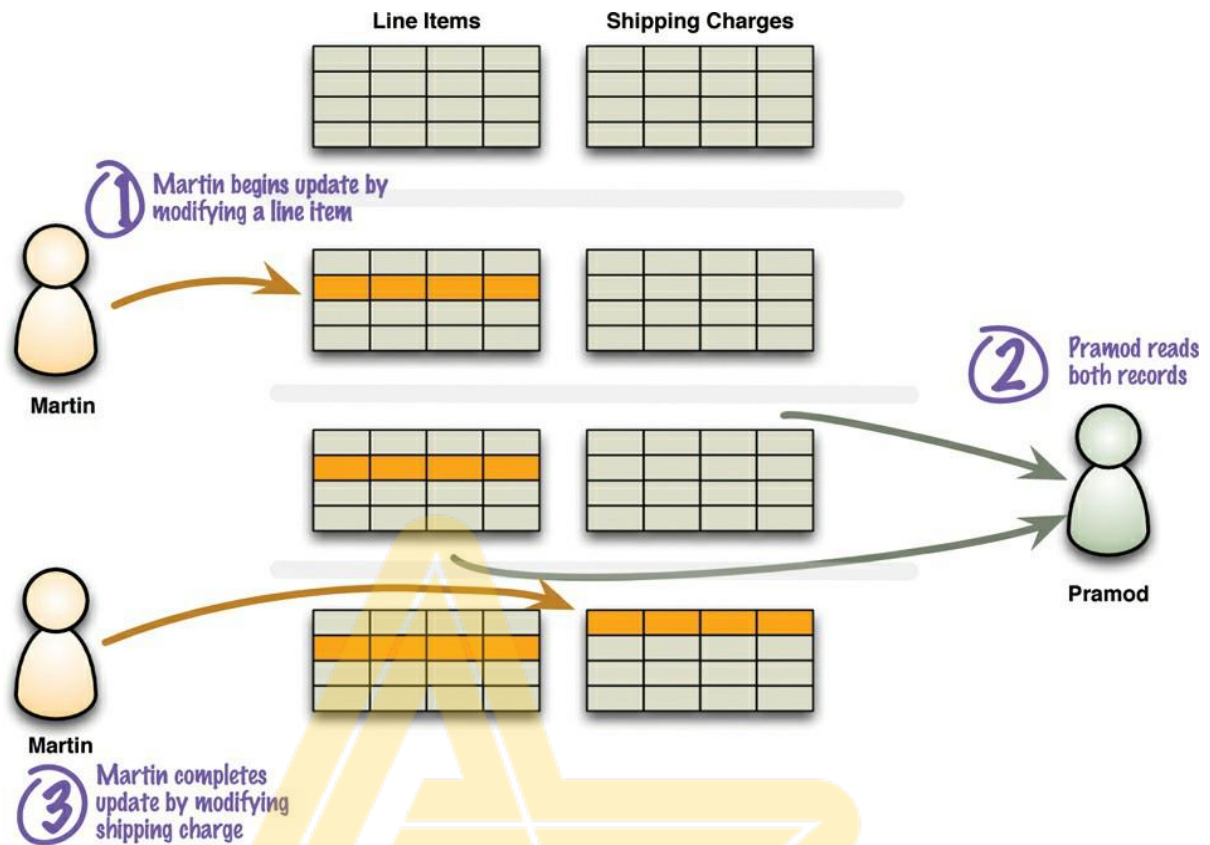


Figure 2.1. A read-write conflict in logical consistency

We refer to this type of consistency as **logical consistency**: ensuring that different data items make sense together. To avoid a logically inconsistent read-write conflict, relational databases support the notion of transactions. Providing Martin wraps his two writes in a transaction, the system guarantees that Pramod will either read both data items before the update or both after the update.

A common claim we hear is that NoSQL databases don't support transactions and thus can't be consistent. Such claim is mostly wrong because it glosses over lots of important details. Our first clarification is that any statement about lack of transactions usually only applies to some NoSQL databases, in particular the aggregate-oriented ones. In contrast, graph databases tend to support ACID transactions just the same as relational databases.

Secondly, aggregate-oriented databases do support atomic updates, but only within a single aggregate. This means that you will have logical consistency within an aggregate but not between aggregates. So in the example, you could avoid running into that inconsistency if the order, the delivery charge, and the line items are all part of a single order aggregate.

Of course not all data can be put in the same aggregate, so any update that affects multiple aggregates leaves open a time when clients could perform an inconsistent read. The length of time an inconsistency is present is called the **inconsistency window**. A NoSQL system may have a quite short inconsistency window: As one data point, Amazon's documentation says that the inconsistency window for its SimpleDB service is usually less than a second.

This example of a logically inconsistent read is the classic example that you'll see in any book that touches database programming. Once you introduce replication, however, you get a whole new kind of inconsistency. Let's imagine there's one last hotel room for a desirable event. The hotel reservation system runs on many nodes. Martin and Cindy are a couple considering this room, but they are discussing this on the phone because Martin is in London and Cindy is in Boston. Meanwhile Pramod, who is in Mumbai, goes and books that last room. That updates the replicated room availability, but the update gets to Boston quicker than it gets to London. When Martin and Cindy fire up their browsers to see if the room is available, Cindy sees it booked and Martin sees it free. This is another inconsistent read—but it's a breach of a different form of consistency we call **replication consistency**: ensuring that the same data item has the same value when read from different replicas (see [Figure 1.2](#)).

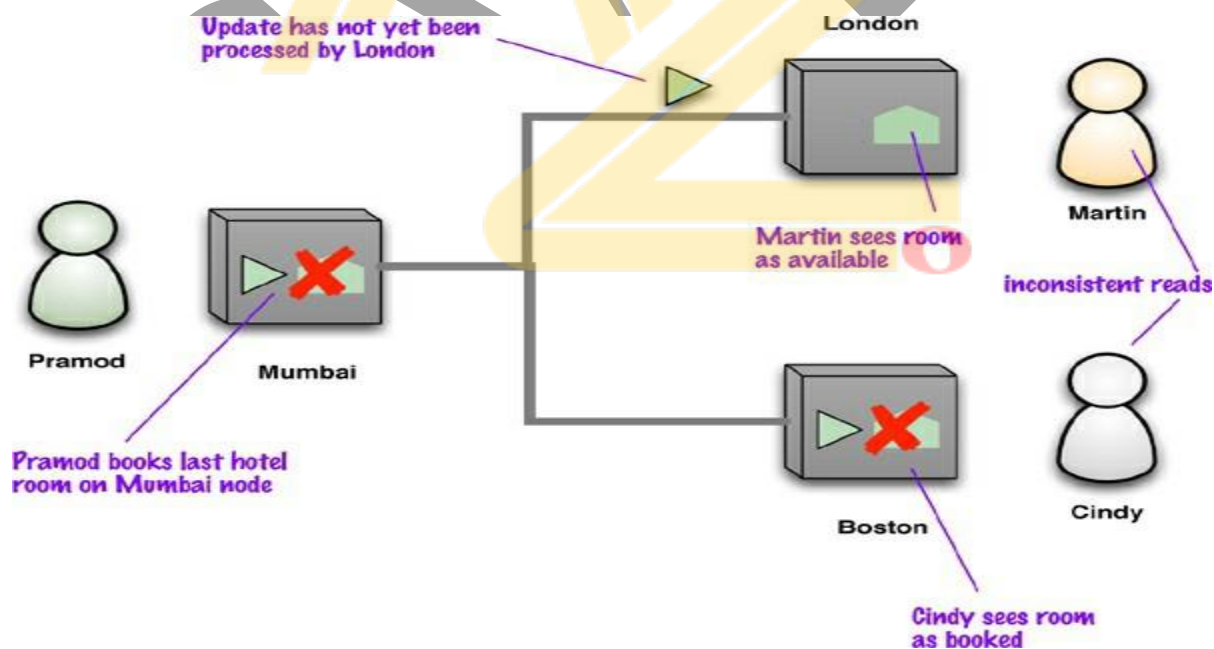


Figure 1.2. An example of replication inconsistency

Eventually, of course, the updates will propagate fully, and Martin will see the room is fully

booked. Therefore this situation is generally referred to as **eventually consistent**, meaning that at any time nodes may have replication inconsistencies but, if there are no further updates, eventually all nodes will be updated to the same value. Data that is out of date is generally referred to as **stale**, which reminds us that a cache is another form of replication—essentially following the master-slave distribution model.

Although replication consistency is independent from logical consistency, replication can exacerbate a logical inconsistency by lengthening its inconsistency window. Two different updates on the master may be performed in rapid succession, leaving an inconsistency window of milliseconds. But delays in networking could mean that the same inconsistency window lasts for much longer on a slave.

Consistency guarantees aren't something that's global to an application. You can usually specify the level of consistency you want with individual requests. This allows you to use weak consistency most of the time when it isn't an issue, but request strong consistency when it is.

The presence of an inconsistency window means that different people will see different things at the same time. If Martin and Cindy are looking at rooms while on a transatlantic call, it can cause confusion. It's more common for users to act independently, and then this is not a problem. But inconsistency windows can be particularly problematic when you get inconsistencies with yourself. Consider the example of posting comments on a blog entry. Few people are going to worry about inconsistency windows of even a few minutes while people are typing in their latest thoughts. Often, systems handle the load of such sites by running on a cluster and load-balancing incoming requests to different nodes. Therein lies a danger: You may post a message using one node, then refresh your browser, but the refresh goes to a different node which hasn't received your post yet—and it looks like your post was lost.

In situations like this, you can tolerate reasonably long inconsistency windows, but you need **read-your-writes consistency** which means that, once you've made an update, you're guaranteed to continue seeing that update. One way to get this in an otherwise eventually consistent system is to provide **session consistency**: Within a user's session there is read-your-writes consistency. This does mean that the user may lose that consistency should their session end for some reason or should the user access the same system simultaneously from different computers, but these cases are relatively rare.

There are a couple of techniques to provide session consistency. A common way, and often the easiest way, is to have a **sticky session**: a session that's tied to one node (this is also called **session affinity**). A sticky session allows you to ensure that as long as you keep read-your-writes consistency on a node, you'll get it for sessions too. The downside is that sticky sessions reduce the ability of the load balancer to do its job.

Another approach for session consistency is to use version stamps ([“Version Stamps,”](#) p. 61) and ensure every interaction with the data store includes the latest version stamp seen by a session. The server node must then ensure that it has the updates that include that version stamp before responding to a request.

Maintaining session consistency with sticky sessions and master-slave replication can be awkward if you want to read from the slaves to improve read performance but still need to write to the master. One way of handling this is for writes to be sent the slave, who then takes responsibility for forwarding them to the master while maintaining session consistency for its client. Another approach is to switch the session to the master temporarily when doing a write, just long enough that reads are done from the master until the slaves have caught up with the update.

We're talking about replication consistency in the context of a data store, but it's also an important factor in overall application design. Even a simple database system will have lots of occasions where data is presented to a user, the user cogitates, and then updates that data. It's usually a bad idea to keep a transaction open during user interaction because there's a real danger of conflicts when the user tries to make her update, which leads to such approaches as offline locks [\[Fowler PoEAA\]](#).

2.3 Relaxing Consistency

Consistency is a Good Thing but, sadly, sometimes we have to sacrifice it. It is always possible to design a system to avoid inconsistencies, but often impossible to do so without making unbearable sacrifices in other characteristics of the system. As a result, we often have to tradeoff consistency for something else. While some architects see this as a disaster, we see it as part of the inevitable tradeoffs involved in system design. Furthermore, different domains have different tolerances for inconsistency, and we need to take this tolerance into account as we make our decisions.

Trading off consistency is a familiar concept even in single-server relational database systems. Here, our principal tool to enforce consistency is the transaction, and transactions can provide strong consistency guarantees. However, transaction systems usually come with the ability to relax isolation levels, allowing queries to read data that hasn't been committed yet, and in practice we see most applications relax consistency down from the highest isolation level (serialized) in order to get effective performance. We most commonly see people using the read-committed transaction level, which eliminates some read-write conflicts but allows others.

Many systems forgo transactions entirely because the performance impact of transactions is too high. We've seen this in a couple different ways. On a small scale, we saw the popularity of MySQL during the days when it didn't support transactions. Many websites liked the high speed of MySQL and were prepared to live without transactions. At the other end of the scale, some very large websites, such as eBay [\[Pritchett\]](#), have had to forgo transactions in order to perform acceptably—this is particularly true when you need to introduce sharding. Even without these constraints, many application builders need to interact with remote systems that can't be properly included within a transaction boundary, so updating outside of transactions is a quite common occurrence for enterprise applications.

2.4 The CAP Theorem

In the NoSQL world it's common to refer to the CAP theorem as the reason why you may need to relax consistency. It was originally proposed by Eric Brewer in 2000 [\[Brewer\]](#) and given a formal proof by Seth Gilbert and Nancy Lynch [\[Lynch and Gilbert\]](#) a couple of years later. (You may also hear this referred to as Brewer's Conjecture.)

The basic statement of the CAP theorem is that, given the three properties of Consistency, Availability, and Partition tolerance, you can only get two. Obviously this depends very much on how you define these three properties, and differing opinions have led to several debates on what the real consequences of the CAP theorem are.

Consistency is pretty much as we've defined it so far. **Availability** has a particular meaning in the context of CAP it means that if you can talk to a node in the cluster, it can read and write data. That's subtly different from the usual meaning, which we'll explore later. **Partition tolerance** means that the cluster can survive communication breakages in the cluster that separate the cluster into multiple partitions unable to communicate with each other (situation known as a **split brain**,

(Figure 1.3).

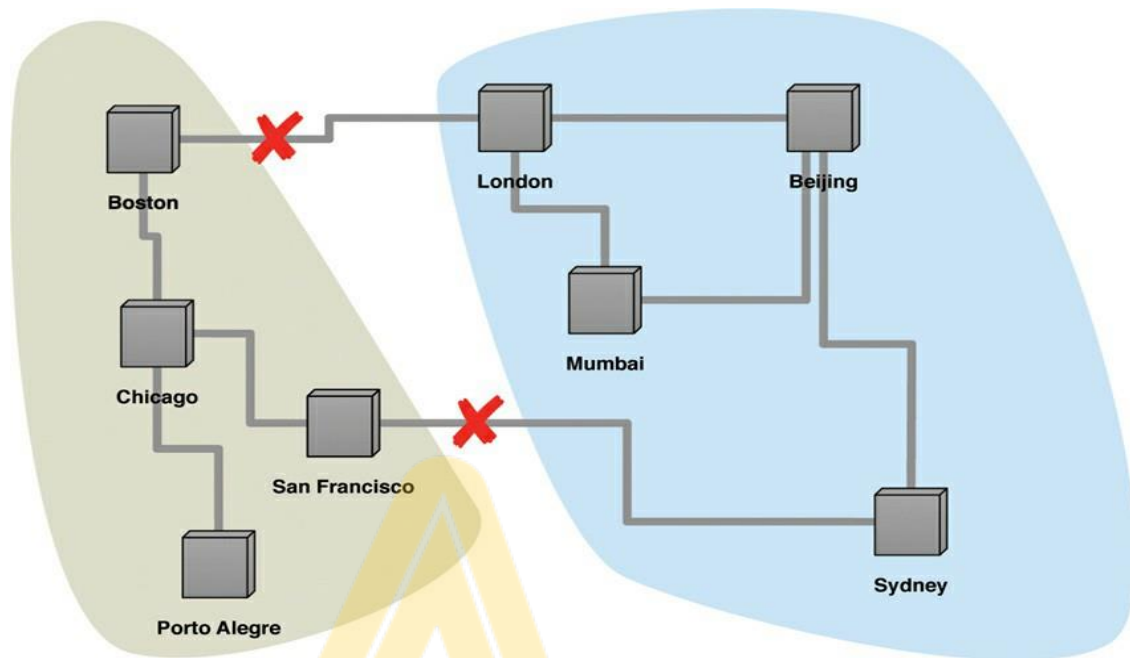


Figure 1.3. With two breaks in the communication lines, the network partitions into two groups.

A single-server system is the obvious example of a CA system a system that has Consistency and Availability but not Partition tolerance. A single machine can't partition, so it does not have to worry about partition tolerance. There's only one node so if it's up, it's available. Being up and keeping consistency is reasonable. This is the world that most relational database systems live in.

It is theoretically possible to have a CA cluster. However, this would mean that if a partition ever occurs in the cluster, all the nodes in the cluster would go down so that no client can talk to a node. By the usual definition of "available," this would mean a lack of availability, but this is where CAP's special usage of "availability" gets confusing. CAP defines "availability" to mean "every request received by a nonfailing node in the system must result in a response" [\[Lynch and Gilbert\]](#). So a failed, unresponsive node doesn't infer a lack of CAP availability.

This does imply that you can build a CA cluster, but you have to ensure it will only partition rarely and completely. This can be done, at least within a data center, but it's usually prohibitively expensive. Remember that in order to bring down all the nodes in a cluster on a partition, you also have to detect the partition in a timely manner—which itself is no small feat.

So clusters have to be tolerant of network partitions. And here is the real point of the CAP

theorem. Although the CAP theorem is often stated as “you can only get two out of three,” in practice what it’s saying is that in a system that may suffer partitions, as distributed system do, you have to trade off consistency versus availability. This isn’t a binary decision; often, you can trade off a little consistency to get some availability. The resulting system would be neither perfectly consistent nor perfectly available—but would have a combination that is reasonable for your particular needs.

An example should help illustrate this. Martin and Pramod are both trying to book the last hotel room on a system that uses peer-to-peer distribution with two nodes (London for Martin and Mumbai for Pramod). If we want to ensure consistency, then when Martin tries to book his room on the London node, that node must communicate with the Mumbai node before confirming the booking. Essentially, both nodes must agree on the serialization of their requests. This gives us consistency—but should the network link break, then neither system can book any hotel room, sacrificing availability.

One way to improve availability is to designate one node as the master for a particular hotel and ensure all bookings are processed by that master. Should that master be Mumbai, then Mumbai can still process hotel bookings for that hotel and Pramod will get the last room. If we use master-slave replication, London users can see the inconsistent room information but cannot make a booking and thus cause an update inconsistency. However, users expect that it could happen in this situation—so, again, the compromise works for this particular use case.

This improves the situation, but we still can’t book a room on the London node for the hotel whose master is in Mumbai if the connection goes down. In CAP terminology, this is a failure of availability in that Martin can talk to the London node but the London node cannot update the data. To gain more availability, we might allow both systems to keep accepting hotel reservations even if the network link breaks down. The danger here is that Martin and Pramod book the last hotel room. However, depending on how this hotel operates, that may be fine. Often, travel companies tolerate a certain amount of overbooking in order to cope with no-shows. Conversely, some hotels always keep a few rooms clear even when they are fully booked, in order to be able to swap a guest out of a room with problems or to accommodate a high-status late booking. Some might even cancel the booking with an apology once they detected the conflict—reasoning that the cost of that is less than the cost of losing bookings on network failures.

The classic example of allowing inconsistent writes is the shopping cart, as discussed in Dynamo [\[Amazon's Dynamo\]](#). In this case you are always allowed to write to your shopping cart, even if network failures mean you end up with multiple shopping carts. The checkout process can merge the two shopping carts by putting the union of the items from the carts into a single cart and returning that. Almost always that's the correct answer—but if not, the user gets the opportunity to look at the cart before completing the order.

The lesson here is that although most software developers treat update consistency as The Way Things Must Be, there are cases where you can deal gracefully with inconsistent answers to requests. These situations are closely tied to the domain and require domain knowledge to know how to resolve. Thus you can't usually look to solve them purely within the development team—you have to talk to domain experts. If you can find a way to handle inconsistent updates, this gives you more options to increase availability and performance. For a shopping cart, it means that shoppers can always shop, and do so quickly. And as Patriotic Americans, we know how vital it is to support Our Retail Destiny.

A similar logic applies to read consistency. If you are trading financial instruments over a computerized exchange, you may not be able to tolerate any data that isn't right up to date. However, if you are posting a news item to a media website, you may be able to tolerate old pages for minutes.

In these cases you need to know how tolerant you are of stale reads, and how long the inconsistency window can be—often in terms of the average length, worst case, and some measure of the distribution for the lengths. Different data items may have different tolerances for staleness, and thus may need different settings in your replication configuration.

Advocates of NoSQL often say that instead of following the ACID properties of relational transactions, NoSQL systems follow the BASE properties (Basically Available, Soft state, Eventual consistency) [Brewer]. Although we feel we ought to mention the BASE acronym here, we don't think it's very useful. The acronym is even more contrived than ACID, and neither "basically available" nor "soft state" have been well defined. We should also stress that when Brewer introduced the notion of BASE, he saw the tradeoff between ACID and BASE as a spectrum, not a binary choice.

We've included this discussion of the CAP theorem because it's often used (and abused) when talking about the tradeoffs involving consistency in distributed databases. However, it's usually better to think not about the tradeoff between consistency and availability but rather between consistency and *latency*. We can summarize much of the discussion about consistency in distribution by saying that we can improve consistency by getting more nodes involved in the interaction, but each node we add increases the response time of that interaction. We can then think of availability as the limit of latency that we're prepared to tolerate; once latency gets too high, we give up and treat the data as unavailable—which neatly fits its definition in the context of CAP.

2.5 Relaxing Durability

So far we've talked about consistency, which is most of what people mean when they talk about the ACID properties of database transactions. The key to Consistency is serializing requests by forming Atomic, Isolated work units. But most people would scoff at relaxing durability—after all, what is the point of a data store if it can lose updates?

As it turns out, there are cases where you may want to trade off some durability for higher performance. If a database can run mostly in memory, apply updates to its in-memory representation, and periodically flush changes to disk, then it may be able to provide substantially higher responsiveness to requests. The cost is that, should the server crash, any updates since the last flush will be lost.

One example of where this tradeoff may be worthwhile is storing user-session state. A big website may have many users and keep temporary information about what each user is doing in some kind of session state. There's a lot of activity on this state, creating lots of demand, which affects the responsiveness of the website. The vital point is that losing the session data isn't too

much of a tragedy—it will create some annoyance, but maybe less than a slower website would cause. This makes it a good candidate for nondurable writes. Often, you can specify the durability needs on a

call-by-call basis, so that more important updates can force a flush to disk.

Another example of relaxing durability is capturing telemetric data from physical devices. It maybe that you'd rather capture data at a faster rate, at the cost of missing the last updates should the server go down.

Another class of durability tradeoffs comes up with replicated data. A failure of **replication durability** occurs when a node processes an update but fails before that update is replicated to the other nodes. A simple case of this may happen if you have a master-slave distribution model where the slaves appoint a new master automatically should the existing master fail. If a master does fail, any writes not passed onto the replicas will effectively become lost. Should the master come back online, those updates will conflict with updates that have happened since. We think of this as a durability problem because you think your update has succeeded since the master acknowledged it, but a master node failure caused it to be lost.

If you're sufficiently confident in bringing the master back online rapidly, this is a reason not to auto-failover to a slave. Otherwise, you can improve replication durability by ensuring that the master waits for some replicas to acknowledge the update before the master acknowledges it to the client.

Obviously, however, that will slow down updates and make the cluster unavailable if slaves fail—so, again, we have a tradeoff, depending upon how vital durability is. As with basic durability, it's useful for individual calls to indicate what level of durability they need.

2.6 Quorums

When you're trading off consistency or durability, it's not an all or nothing proposition. The more nodes you involve in a request, the higher is the chance of avoiding an inconsistency. This naturally leads to the question: How many nodes need to be involved to get strong consistency?

Imagine some data replicated over three nodes. You don't need all nodes to acknowledge a write to ensure strong consistency; all you need is two of them—a majority. If you have conflicting writes, only one can get a majority. This is referred to as a **write quorum** and expressed in a slightly pretentious inequality of $W > N/2$, meaning the number of nodes

participating in the write (W) must be more than the half the number of nodes involved in replication (N). The number of replicas is often called the **replication factor**.

Similarly to the write quorum, there is the notion of read quorum: How many nodes you need to contact to be sure you have the most up-to-date change. The read quorum is a bit more complicated because it depends on how many nodes need to confirm a write.

Let's consider a replication factor of 3. If all writes need two nodes to confirm ($W = 2$) then we need to contact at least two nodes to be sure we'll get the latest data. If, however, writes are only confirmed by a single node ($W = 1$) we need to talk to all three nodes to be sure we have the latest updates. In this case, since we don't have a write quorum, we may have an update conflict, but by contacting enough readers we can be sure to detect it. Thus we can get strongly consistent reads even if we don't have strong consistency on our writes.

This relationship between the number of nodes you need to contact for a read (R), those confirming a write (W), and the replication factor (N) can be captured in an inequality: You can have a strongly consistent read if $R + W > N$.

These inequalities are written with a peer-to-peer distribution model in mind. If you have a master-slave distribution, you only have to write to the master to avoid write-write conflicts, and similarly only read from the master to avoid read-write conflicts. With this notation, it is common to confuse the number of nodes in the cluster with the replication factor, but these are often different. I may have 100 nodes in my cluster, but only have a replication factor of 3, with most of the distribution occurring due to sharding.

Indeed most authorities suggest that a replication factor of 3 is enough to have good resilience. This allows a single node to fail while still maintaining quora for reads and writes. If you have automatic rebalancing, it won't take too long for the cluster to create a third replica, so the chances of losing a second replica before a replacement comes up are slight.

The number of nodes participating in an operation can vary with the operation. When writing, we might require quorum for some types of updates but not others, depending on how much we value consistency and availability. Similarly, a read that needs speed but can tolerate staleness should contact less nodes.

Often you may need to take both into account. If you need fast, strongly consistent reads, you could require writes to be acknowledged by all the nodes, thus allowing reads to contact only one

($N = 3$, $W = 3$, $R = 1$). That would mean that your writes are slow, since they have to contact all three nodes, and you would not be able to tolerate losing a node. But in some circumstances that may be the tradeoff to make.

The point to all of this is that you have a range of options to work with and can choose which combination of problems and advantages to prefer. Some writers on NoSQL talk about a simple tradeoff between consistency and availability; we hope you now realize that it's more flexible—and more complicated—than that.

Key Points

- Write-write conflicts occur when two clients try to write the same data at the same time. Read-write conflicts occur when one client reads inconsistent data in the middle of another client's write.
- Pessimistic approaches lock data records to prevent conflicts. Optimistic approaches detect conflicts and fix them.
- Distributed systems see read-write conflicts due to some nodes having received updates while other nodes have not. Eventual consistency means that at some point the system will become consistent once all the writes have propagated to all the nodes.
- Clients usually want read-your-writes consistency, which means a client can write and then immediately read the new value. This can be difficult if the read and the write happen on different nodes.
- To get good consistency, you need to involve many nodes in data operations, but this increases latency. So you often have to trade off consistency versus latency.
- The CAP theorem states that if you get a network partition, you have to trade off availability of data versus consistency.
- Durability can also be traded off against latency, particularly if you want to survive failures with replicated data.
- You do not need to contact all replicants to preserve strong consistency with replication; you just need a large enough quorum.

Chapter 3.

Version Stamps

Many critics of NoSQL databases focus on the lack of support for transactions. Transactions are a useful tool that helps programmers support consistency. One reason why many NoSQL proponents worry less about a lack of transactions is that aggregate-oriented NoSQL databases do support atomic updates within an aggregate—and aggregates are designed so that their data forms a natural unit of update. That said, it's true that transactional needs are something to take into account when you decide what database to use.

As part of this, it's important to remember that transactions have limitations. Even within a transactional system we still have to deal with updates that require human intervention and usually cannot be run within transactions because they would involve holding a transaction open for too long. We can cope with these using **version stamps**—which turn out to be handy in other situations as well, particularly as we move away from the single-server distribution model.

3.1 Business and System Transactions

The need to support update consistency without transactions is actually a common feature of systems even when they are built on top of transactional databases. When users think about transactions, they usually mean business transactions. A business transaction may be something like browsing a product catalog, choosing a bottle of Talisker at a good price, filling in credit card information, and confirming the order. Yet all of this usually won't occur within the system transaction provided by the database because this would mean locking the database elements while the user is trying to find their credit card and gets called off to lunch by their colleagues.

Usually applications only begin a system transaction at the end of the interaction with the user, so that the locks are only held for a short period of time. The problem, however, is that calculations and decisions may have been made based on data that's changed. The price list may have updated the price of the Talisker, or someone may have updated the customer's address, changing the shipping charges.

The broad techniques for handling this are offline concurrency [Fowler PoEAA], useful in NoSQL situations too. A particularly useful approach is the Optimistic Offline Lock [Fowler PoEAA], a form of conditional update where a client operation rereads any information that the business transaction relies on and checks that it hasn't changed since it was originally read and displayed to the user. A good way of doing this is to ensure that records in the database contain some form of version stamp: a field that changes every time the underlying data in the record changes. When you read the data you keep a note of the version stamp, so that when you write data you can check to see if the version has changed.

You may have come across this technique with updating resources with HTTP [HTTP]. One way of doing this is to use etags. Whenever you get a resource, the server responds with an etag in the header. This etag is an opaque string that indicates the version of the resource. If you then update that resource, you can use a conditional update by supplying the etag that you got from your last GET. If the resource has changed on the server, the etags wo

Some databases provide a similar mechanism of conditional update that allows you to ensure updates won't be based on stale data. You can do this check yourself, although you then have to ensure no other thread can run against the resource between your read and your update. (Sometimes this is called a compare-and-set (CAS) operation, whose name comes from the CAS operations done in processors. The difference is that a processor CAS compares a value before setting it, while a database conditional update compares a version stamp of the value.)

There are various ways you can construct your version stamps. You can use a counter, always incrementing it when you update the resource. Counters are useful since they make it easy to tell if one version is more recent than another. On the other hand, they require the server to generate the counter value, and also need a single master to ensure the counters aren't duplicated.

Another approach is to create a GUID, a large random number that's guaranteed to be unique. These use some combination of dates, hardware information, and whatever other sources of randomness they can pick up. The nice thing about GUIDs is that they can be generated by anyone and you'll never get a duplicate; a disadvantage is that they are large and can't be compared

directly for recentness.

A third approach is to make a hash of the contents of the resource. With a big enough hash key size, a content hash can be globally unique like a GUID and can also be generated by anyone; the advantage is that they are deterministic—any node will generate the same content hash for same resource data.

However, like GUIDs they can't be directly compared for recentness, and they can be lengthy.

A fourth approach is to use the timestamp of the last update. Like counters, they are reasonably short and can be directly compared for recentness, yet have the advantage of not needing a single master. Multiple machines can generate timestamps—but to work properly, their clocks have to be kept in sync. One node with a bad clock can cause all sorts of data corruptions. There's also a danger that if the timestamp is too granular you can get duplicates—it's no good using timestamps of a millisecond precision if you get many updates per millisecond.

You can blend the advantages of these different version stamp schemes by using more than one of them to create a composite stamp. For example, CouchDB uses a combination of counter and content hash. Most of the time this allows version stamps to be compared for recentness, even when you use peer-to-peer replication. Should two peers update at the same time, the combination of the same count and different content hashes makes it easy to spot the conflict.

As well as helping to avoid update conflicts, version stamps are also useful for providing session consistency.

3.2 Version Stamps on Multiple Nodes

The basic version stamp works well when you have a single authoritative source for data, such as a single server or master-slave replication. In that case the version stamp is controlled by the master. Any slaves follow the master's stamps. But this system has to be enhanced in a peer-to-peer distribution model because there's no longer a single place to set the version stamps.

If you're asking two nodes for some data, you run into the chance that they may give you different answers. If this happens, your reaction may vary depending on the cause of that difference. It may

be that an update has only reached one node but not the other, in which case you can accept the latest (assuming you can tell which one that is). Alternatively, you may have run into an inconsistent update, in which case you need to decide how to deal with that. In this situation, a simple GUID or etag won't suffice, since these don't tell you enough about the relationships.

The simplest form of version stamp is a counter. Each time a node updates the data, it increments the counter and puts the value of the counter into the version stamp. If you have blue and green slave replicas of a single master, and the blue node answers with a version stamp of 4 and the green node with 6, you know that the green's answer is more recent.

In multiple-master cases, we need something fancier. One approach, used by distributed version control systems, is to ensure that all nodes contain a history of version stamps. That way you can see if the blue node's answer is an ancestor of the green's answer. This would either require the clients to hold onto version stamp histories, or the server nodes to keep version stamp histories and include them when asked for data. This also detects an inconsistency, which we would see if we get two version stamps and neither of them has the other in their histories. Although version control systems keep these kinds of histories, they aren't found in NoSQL databases.

A simple but problematic approach is to use timestamps. The main problem here is that it's usually difficult to ensure that all the nodes have a consistent notion of time, particularly if updates can happen rapidly. Should a node's clock get out of sync, it can cause all sorts of trouble. In addition, you can't detect write-write conflicts with timestamps, so it would only work well for the single-master case—and then a counter is usually better.

The most common approach used by peer-to-peer NoSQL systems is a special form of version stamp which we call a vector stamp. In essence, a vector stamp is a set of counters, one for each node. A vector stamp for three nodes (blue, green, black) would look something like [blue: 43, green: 54, black: 12]. Each time a node has an internal update, it updates its own counter, so an update in the green node would change the vector to [blue: 43, green: 55, black: 12].

Whenever two nodes communicate, they synchronize their vector stamps. There are several variations of exactly how this synchronization is done. We're coining the term "vector stamp" as a general term in this book; you'll also come across vector clocks and version vectors—these are specific forms of vector stamps that differ in how they synchronize.

By using this scheme you can tell if one version stamp is newer than another because the newer stamp will have all its counters greater than or equal to those in the older stamp. So [blue: 1, green: 2, black: 5] is newer than [blue:1, green: 1, black 5] since one of its counters is greater. If both stamps have a counter greater than the other, e.g. [blue: 1, green: 2, black: 5] and [blue: 2, green: 1, black: 5], then you have a write-write conflict.

There may be missing values in the vector, in which case we use treat the missing value as 0. So [blue: 6, black: 2] would be treated as [blue: 6, green: 0, black: 2]. This allows you to easily add new nodes without invalidating the existing vector stamps.

Vector stamps are a valuable tool that spots inconsistencies, but doesn't resolve them. Any conflict resolution will depend on the domain you are working in. This is part of the consistency/latency tradeoff. You either have to live with the fact that network partitions may make your system unavailable, or you have to detect and deal with inconsistencies.

Key Points

- Version stamps help you detect concurrency conflicts. When you read data, then update it, you can check the version stamp to ensure nobody updated the data between your read and write.
- Version stamps can be implemented using counters, GUIDs, content hashes, timestamps, or a combination of these.
- With distributed systems, a vector of version stamps allows you to detect when different nodes have conflicting updates.